

Commercial Large Volume Stainless Steel Top Coat Storage Tanks



Photo is of
NV303TS210A

The Large Volume Stainless Steel Top Coat Models Feature:

- **Passivated 316L (10-year warranty) & Duplex Stainless Steel (25-year warranty).**
- **All Tanks Are Constructed and Certified**—In accordance with ASME Sect. IV, Part HLW for 125 PSI (862 kPa). 150 PSI (1034 kPa) is available as an option.
- **Vertical or Horizontal Construction**—Horizontal models require two saddles and have two additional 3" (76mm) NPT fittings.
- **Sprayed-On Rigid Insulation Top Coat**—2 1/4" (57mm) (R-value of 16) of high density polyurethane foam is encapsulated with a 100% acrylic top coat that is formulated to withstand extreme weather and a full range of conditions.
- **Optional HydroJet HC[®]**—Stainless steel, dielectrically isolated recirculation tube minimizes turbulence and directs the hottest water to the top of the tank to maximize hot water delivery.
- **No Anode Rods**—Eliminates time and cost to service anode rods.
- **Water Connections**—Two female NPT fittings are located on the front for ease of service and installation (reference chart for sizes). Additional size fittings are available as an option.
- **Fully Customizable**—Custom tank gallon capacities and tapping sizes/locations.
- **Optional Hand Hole Cleanout and Manway**—4" x 6" (102mm x 152mm) diameter Hand Hole cleanout and 12" x 16" (305mm x 406mm) diameter Manway opening allow removal of sediment and inspection of interior surface.
 - Manway standard on all tanks with a vessel diameter of 42" (1067mm) or greater.
- **One 3/4" (19mm) NPT Aquastat Fitting**—Located in the lower part of the tank.
- **Designed for Storage of Potable Water up to 180°F (82°C).**
- **Lifting Lugs**—Standard.

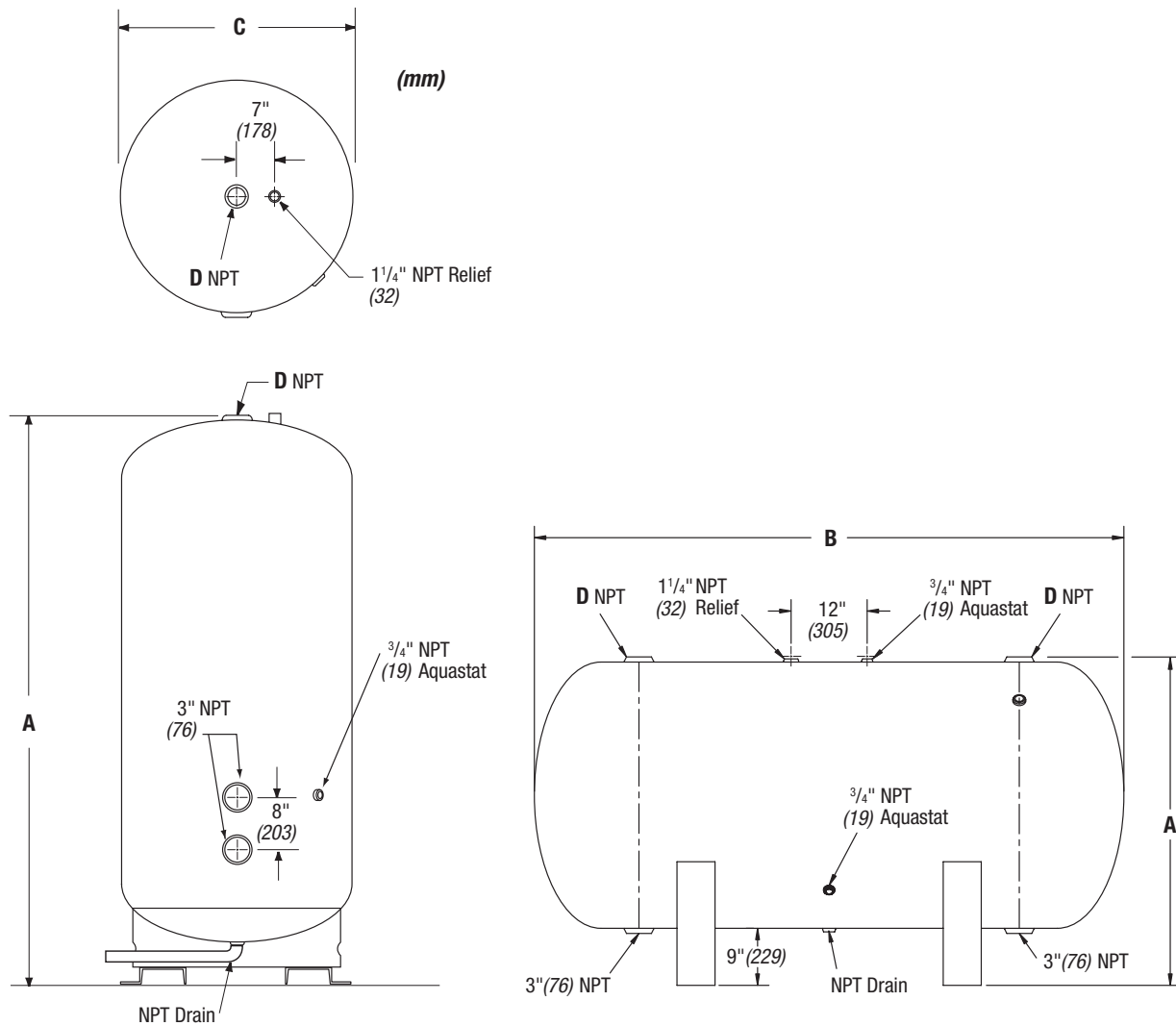


10 or 25-Year Limited Tank Warranties / 1-Year Limited Warranty on Component Parts.

For more information on warranty, please visit www.bradfordwhite.com

For products installed in USA, Canada, and Puerto Rico. Some states do not allow limitations on warranties. See complete copy of the warranty included with the heater.

Commercial Large Volume Stainless Steel Storage Tanks



Tank Options:

- Hand Hole (4"x6") (102mm x 152mm) (Add suffix **-HH**)
- Manway (12"x16") (305mm x 406mm) (Add suffix **-MW**; not required on models with standard manway)
- Extra Tappings (1" - 4") (25mm - 102mm)
- Fully customizable tapping sizes and locations
- Flanged Connections (3" - 10") (76mm - 254mm)
- 150 PSI (1034 kPa) working pressure (Add suffix **-150**)
- Hydrojet HC® (Part number 629-100191-000)
- Seismic Clips

* **For other options consult factory**

Commercial Large Volume Stainless Steel Storage Tanks

Sample Specification:

The stainless steel storage tank shall be a Bradford White Top Coat model with a nominal rated storage capacity of not less than _____ gallons (_____ liters), and overall dimensions of _____ inches (_____ cm.) in height, by _____ inches (_____ cm.) in diameter. The tank shall be constructed of stainless steel and be built in accordance with ASME Boiler and Pressure Vessel Code ASME IV, Part HLW for 125 PSI (862 kPa) and so labeled, with a working pressure of _____ PSI (_____ kPa). The stainless steel storage tank shall carry a ten (10) year limited warranty (twenty-five (25) year limited warranty available on Passivated Duplex Stainless Steel).

General

Front water connections 3" (76mm) NPT (except where noted). T&P tapping 1¼" (32mm) NPT. Aquastat tapping ¾" (19mm) NPT. Most storage tanks are manufactured with convex heads and bases. Some manufacturers list the tank capacity as "Nominal." Generally, this is the theoretical capacity calculated assuming a tank was actually manufactured using a flat (instead of convex) head and base. Bradford White lists both Actual and Nominal capacity for comparison purposes.

Dimensions and specifications subject to change without notice in accordance with our policy of continuous product improvement.

— BRADFORD WHITE IS —

**AMERICAN
STRONG**

Sales: 800-523-2931 ■ Fax 215-641-1612

24/7 Technical Support: 800-334-3393 ■ Email techserv@bradfordwhite.com

Products made by Bradford White are manufactured in the United States using the finest raw materials and components from around the world.

Built to be the Best 