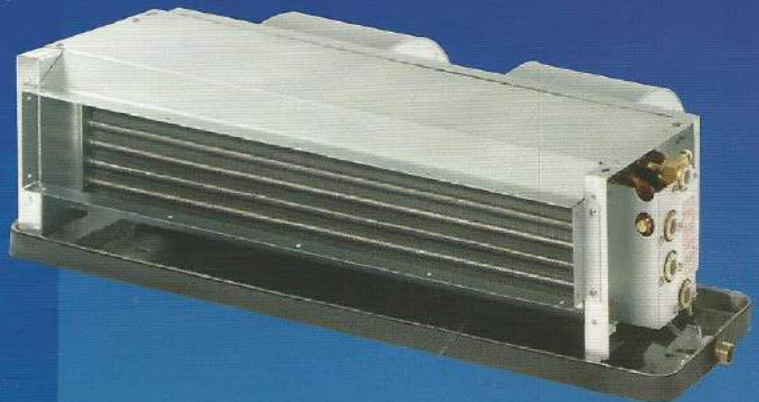


# FAN COIL UNIT

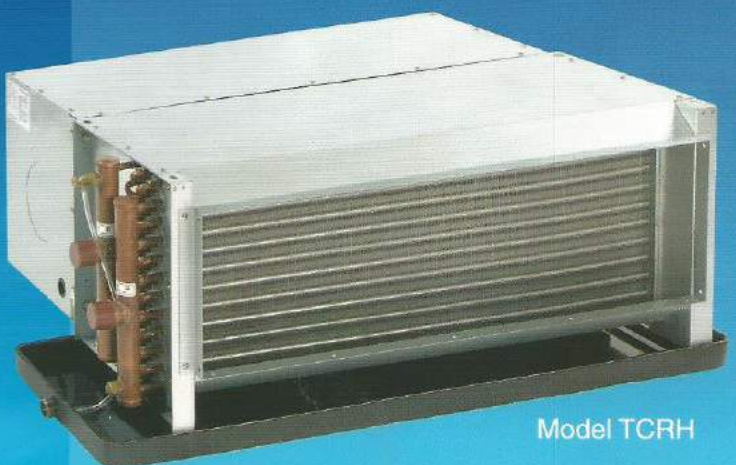
*SINKO*



Model SRC

● Ceiling Recessed Model

## SRC



Model TCRH

● Ceiling Recessed, High Static Model

## TCRH

● Ceiling Mount Exposed Model

### TC

● Floor Mount Exposed Model

### TF

● Floor Mount Recessed Model

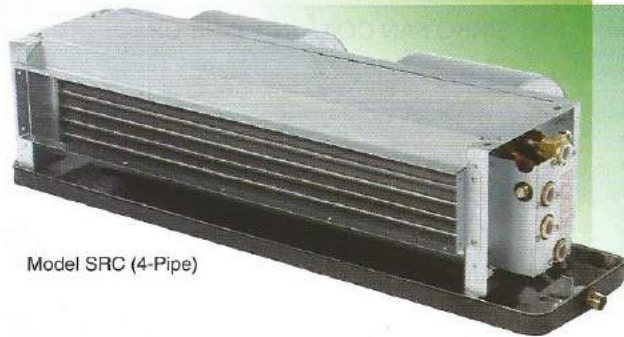
### TFR

**FOR  
220V**

# SINKO FAN COIL UNIT LINEUP

## Model SRC

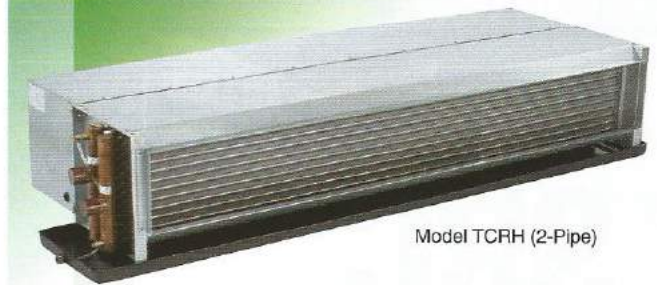
Applicable to Various Kinds of Static Pressure Requirement and Specially Designed for Low Sound Operation.



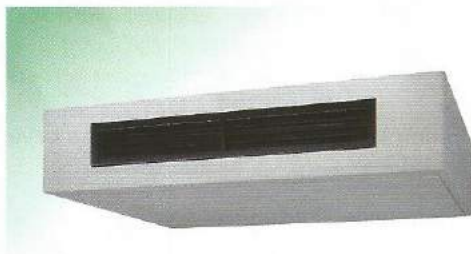
Model SRC (4-Pipe)

## Model TCRH

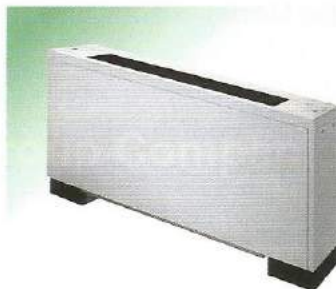
Larger Air Volume, High Static and Low Profile Unit.



Model TCRH (2-Pipe)



Ceiling Mount Exposed Model



Floor Mount Exposed Model



Floor Mount Recessed Model

ENERGY SAVING TYPE ..... UP TO 70%

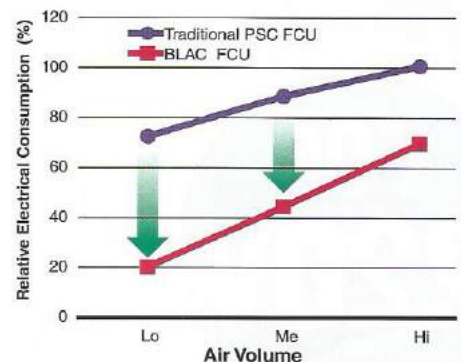
## Model GSRC

BLAC FAN COIL UNIT SERIES

**NEW**



BLAC and PSC FCU Electrical Consumption



# Nomenclature

## Ceiling Recessed Model

# SRC-300-2SW-3R-DRC-PW-Z

SIZE	POWER SOURCE	MOTOR	COIL	DRAIN PAN	PLENUM	FILTER
300	115V <b>1</b>	Standard Model <b>SW</b>	3Row <b>3R</b>	With PC ins <b>DRC</b>	Without Plenum <b>Z</b>	Without filter <b>Z</b>
400	220V <b>2</b>	High Static Model <b>HW</b>	4Row <b>4R</b>	With PC ins, 150mm extended <b>DRC15</b>	Plenum without ins <b>P</b>	Al filter <b>A</b>
600	230V <b>3</b>	Large Air Volume Model <b>SH</b>	DC(2R/1R) <b>DC1</b>	With PC ins, 240mm extended <b>DRC24</b>	Plenum with GW <b>PW</b>	Saran net filter <b>N</b>
800	240V <b>4</b>		DC(3R/1R) <b>DC2</b>	With PE ins <b>DRE</b>	Plenum with PE <b>PE</b>	Other filter <b>S</b>
1000	Special <b>S</b>		High Temp <b>HT</b>	With PE ins, 150mm extended <b>DRE15</b>	Plenum with PC <b>PC</b>	
1200				With PE ins, 240mm extended <b>DRE24</b>		
1400						

## Ceiling Recessed, High Static Model

# TCRH-600-2HW-3R-DRC-PW-Z

SIZE	POWER SOURCE	MOTOR	COIL	DRAIN PAN	PLENUM	FILTER
600	115V <b>1</b>	High Static Model <b>HW</b>	4Row <b>4R</b>	With PC ins <b>DRC</b>	Without Plenum <b>Z</b>	Without filter <b>Z</b>
1000	220V <b>2</b>		6Row <b>6R</b>	With PC ins, 150mm extended <b>DRC15</b>	Plenum without ins <b>P</b>	Al filter <b>A</b>
1200	230V <b>3</b>		DC(3R/1R) <b>DC2</b>	With PE ins <b>DRE</b>	Plenum with GW <b>PW</b>	Saran net filter <b>N</b>
1600	240V <b>4</b>		DC(4R/1R) <b>DC3</b>	With PE ins, 150mm extended <b>DRE15</b>	Plenum with PE <b>PE</b>	Other filter <b>S</b>
2000	Special <b>S</b>		DC(4R/2R) <b>DC4</b>		Plenum with PC <b>PC</b>	
			High Temp <b>HT</b>			

Ceiling Recessed Model-Standard Model  
3-Row Cooling/Heating

**SRC-2SW-3R-DRC**  
**-Z/P/PW/PC**

**SRC-2SW-3R-DRE**  
**-Z/P/PW/PE**



**220V**

**Specification**

Unit Size		300	400	600	800	1000	1200	1400
Air Volume l/s	H	133	189	264	302	422	518	578
	M	114	154	216	251	349	425	495
	L	90	118	167	185	270	329	361
Cooling Capacity KW	SH	1.3	2.1	3.0	3.6	4.5	5.7	6.4
	TH	1.6	2.8	3.9	5.0	5.8	7.4	8.5
Heating Capacity KW		4.0	6.0	8.2	9.8	12.7	15.7	17.6
Water Flow l/s		0.08	0.14	0.19	0.25	0.28	0.36	0.41
W.P.D. kPa		2	7	14	28	6	11	16
Input Power W		50	66	97	121	162	190	237
Running Current A		0.23	0.30	0.44	0.55	0.73	0.87	1.08
Noise dB(A)	H	42.5	40.5	44.5	46.0	47.5	48.0	49.5
	M	39.5	36.0	41.0	41.5	44.0	43.5	46.0
	L	33.5	30.0	35.5	35.0	38.5	37.5	39.0
Weight kg (without plenum)		19	22	24	28	36	42	45
Weight kg (with plenum)		23	27	30	35	44	55	60
Holding Water Volume L		0.8	1.1	1.3	1.7	2.0	2.4	2.7
Casing		Galvanized Steel						
Fan		Galvanized sheet fabricated, Forward-Curved DIDW Fan						
Motor		3-Speed, PSC with Capacitor Cap and Flexible Conduit						
Power Source		AC220V, 50Hz, Single Phase						
Coil		Slit Surfaced, Aluminum Finned Coil complete with Female Sockets at Inlet/Outlet Conn. And Air Vent						
Operating Pressure		Max 1700kPa (250psig) unless otherwise specified						
Drain Pan		Stainless Steel, SUS430						

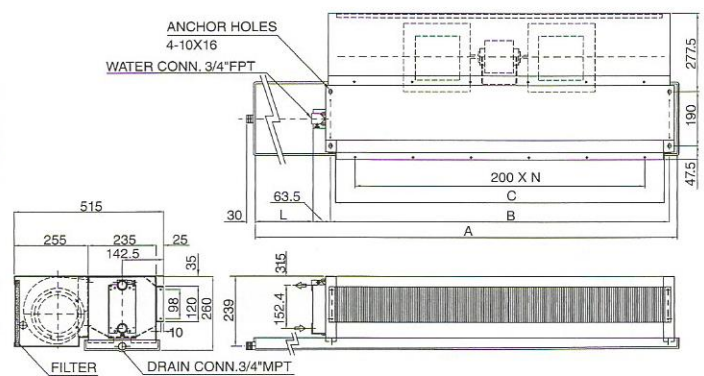
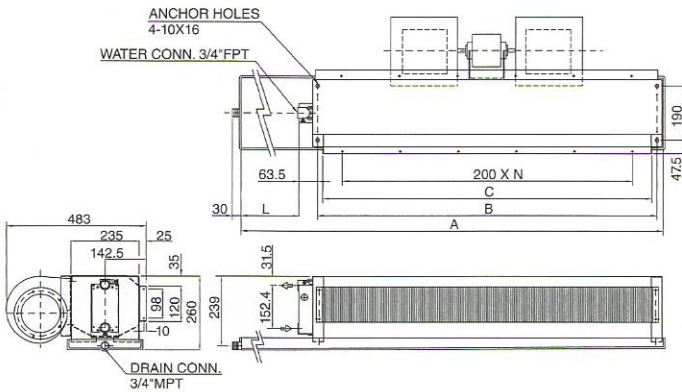
Note:

- Cooling capacity is based on DB24°C, WB17.8°C, EWT7°C, LWT12°C.
- Heating capacity is based on DB20°C, EWT60, same water flow as cooling.
- Cooling/Heating Capacity, Input Power, Running Current are based on H speed.
- Noise is measured at an anechoic chamber, 1m from the unit surface.
- Running current may change according to the conditions.
- Air volume is based on ESP 30Pa. without plenum and filter.

**Dimensions**

Without Plenum **SRC-2SW-3R-DRC-Z** **SRC-2SW-3R-DRE-Z**  
**SRC-2SW-3R-DRC15-Z** **SRC-2SW-3R-DRE15-Z**  
**SRC-2SW-3R-DRC24-Z** **SRC-2SW-3R-DRE24-Z**

With Plenum **SRC-2SW-3R-DRC-P/PW/PC** **SRC-2SW-3R-DRE-P/PW/PC**  
**SRC-2SW-3R-DRC15-P/PW/PC** **SRC-2SW-3R-DRE15-P/PW/PC**  
**SRC-2SW-3R-DRC24-P/PW/PC** **SRC-2SW-3R-DRE24-P/PW/PC**



Unit Size	-Z/P/PW/PE/PC		15-Z/P/PW/PE/PC		24-Z/P/PW/PE/PC		B	C	N	NO. OF FAN	NO. OF MOTOR
	A	L	A	L	A	L					
SRC- 300-2SW-3R-DRC(E)	635	50	785	200	875	290	500	462	2	1	1
SRC- 400-2SW-3R-DRC(E)	885	50	1035	200	1125	290	750	712	3	2	1
SRC- 600-2SW-3R-DRC(E)	1020	50	1170	200	1260	290	885	847	4	2	1
SRC- 800-2SW-3R-DRC(E)	1305	50	1455	200	1545	290	1170	1132	5	2	1
SRC-1000-2SW-3R-DRC(E)	1490	50	1640	200	1730	290	1340	1302	6	3	2
SRC-1200-2SW-3R-DRC(E)	1740	50	1890	200	1980	290	1590	1552	7	4	2
SRC-1400-2SW-3R-DRC(E)	1920	50	2070	200	2160	290	1770	1732	8	4	2

Note:

- Left hand unit is shown.
- Furnish access door to service fan motor.
- Wiring works between motor and switch, and unit to power source by contractors.

Ceiling Recessed Model-Standard Model  
4-Row Cooling/Heating

**SRC-2SW-4R-DRC**  
**-Z/P/PW/PC**  
**SRC-2SW-4R-DRE**  
**-Z/P/PW/PE**



**220V**

**Specification**

Unit Size		300	400	600	800	1000	1200	1400
Air Volume l/s	H	124	172	245	285	394	508	544
	M	107	141	201	242	332	418	467
	L	84	108	155	177	257	320	345
Cooling Capacity KW	SH	1.4	2.2	3.1	3.8	4.8	6.2	6.8
	TH	1.8	2.9	4.3	5.5	6.3	8.5	9.4
Heating Capacity KW		4.3	6.2	8.7	10.5	13.6	17.5	19.0
Water Flow l/s		0.09	0.15	0.21	0.27	0.31	0.41	0.45
W.P.D. kPa		2	5	10	20	5	9	11
Input Power W		49	65	97	120	158	192	235
Running Current A		0.22	0.30	0.44	0.55	0.72	0.87	1.07
Noise dB(A)	H	45.0	42.5	46.5	46.5	49.5	47.5	51.0
	M	41.0	38.0	42.5	42.5	46.0	43.5	47.5
	L	36.0	32.0	37.5	35.5	41.0	37.5	40.5
Weight kg (without plenum)		15.1	19.8	21.8	26	34.6	39.9	42.5
Weight kg (with plenum)		17.7	23.2	26	31.3	40.5	46.2	50.5
Holding Water Volume L		1.0	1.5	1.8	2.3	2.7	3.2	3.5
Casing		Galvanized Steel						
Fan		Galvanized sheet fabricated, Forward-Curved DIDW Fan						
Motor		3-Speed, PSC with Capacitor Cap and Flexible Conduit						
Power Source		AC220V, 50Hz, Single Phase						
Coil		Slit Surfaced, Aluminum Finned Coil complete with Female Sockets at Inlet/Outlet Conn. And Air Vent						
Operating Pressure		Max 1700kPa (250psig) unless otherwise specified						
Drain Pan		Stainless Steel, SUS430						

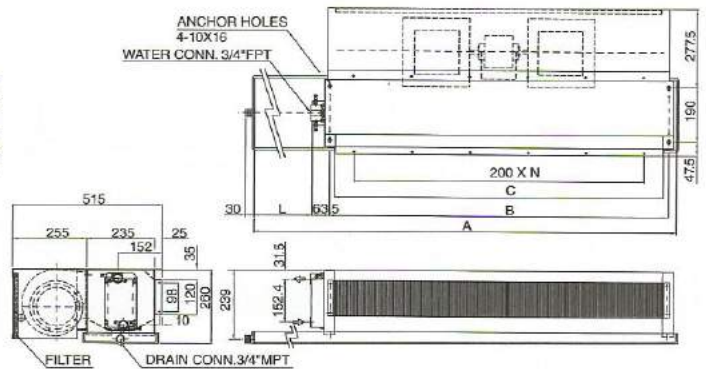
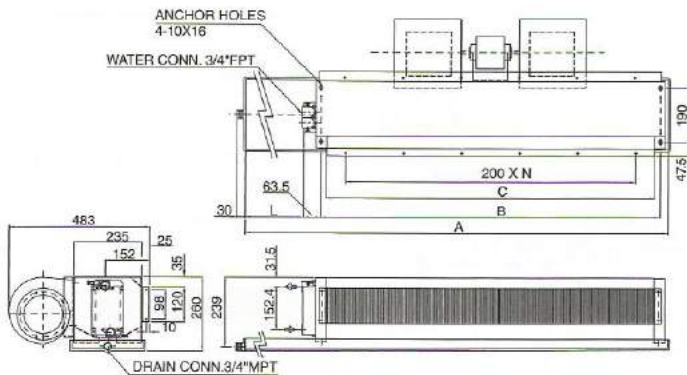
Note:

- Cooling capacity is based on DB24°C, WB17.8°C, EWT7°C, LWT12°C.
- Heating capacity is based on DB20°C, EWT60, same water flow as cooling.
- Cooling/Heating Capacity, Input Power, Running Current are based on H speed.
- Noise is measured at an anechoic chamber, 1m from the unit surface.
- Running current may change according to the conditions.
- Air volume is based on ESP 30Pa, without plenum and filter.

**Dimensions**

Without Plenum **SRC-2SW-4R-DRC-Z**    **SRC-2SW-4R-DRE-Z**  
**SRC-2SW-4R-DRC15-Z**    **SRC-2SW-4R-DRE15-Z**  
**SRC-2SW-4R-DRC24-Z**    **SRC-2SW-4R-DRE24-Z**

With Plenum **SRC-2SW-4R-DRC-P/PW/PC**    **SRC-2SW-4R-DRE-P/PW/PC**  
**SRC-2SW-4R-DRC15-P/PW/PC**    **SRC-2SW-4R-DRE15-P/PW/PC**  
**SRC-2SW-4R-DRC24-P/PW/PC**    **SRC-2SW-4R-DRE24-P/PW/PC**



Unit Size	-Z/P/PW/PE/PC		15-Z/P/PW/PE/PC		24-Z/P/PW/PE/PC		B	C	N	NO. OF FAN	NO. OF MOTOR
	A	L	A	L	A	L					
SRC- 300-2SW-4R-DRC(E)	635	50	785	200	875	290	500	482	2	1	1
SRC- 400-2SW-4R-DRC(E)	885	50	1035	200	1125	290	750	712	3	2	1
SRC- 600-2SW-4R-DRC(E)	1020	50	1170	200	1260	290	885	847	4	2	1
SRC- 800-2SW-4R-DRC(E)	1305	50	1455	200	1545	290	1170	1132	5	2	1
SRC-1000-2SW-4R-DRC(E)	1490	50	1640	200	1730	290	1340	1302	6	3	2
SRC-1200-2SW-4R-DRC(E)	1740	50	1890	200	1980	290	1590	1552	7	4	2
SRC-1400-2SW-4R-DRC(E)	1920	50	2070	200	2160	290	1770	1732	8	4	2

Note:

- Left hand unit is shown.
- Furnish access door to service fan motor.
- Wiring works between motor and switch, and unit to power source by contractors.
- Unit shall be mounted horizontally.
- To prevent condensation, fan interlock valve shall be furnished so that water supply will be stopped when fan is off.

Ceiling Recessed Model-High Static Model  
3-Row Cooling/Heating

# SRC-2HW-3R-DRC -Z/P/PW/PC

# SRC-2HW-3R-DRE -Z/P/PW/PE

## 220V

### Specification

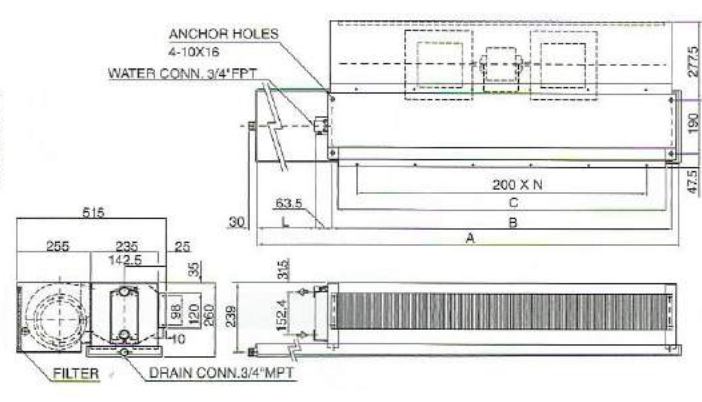
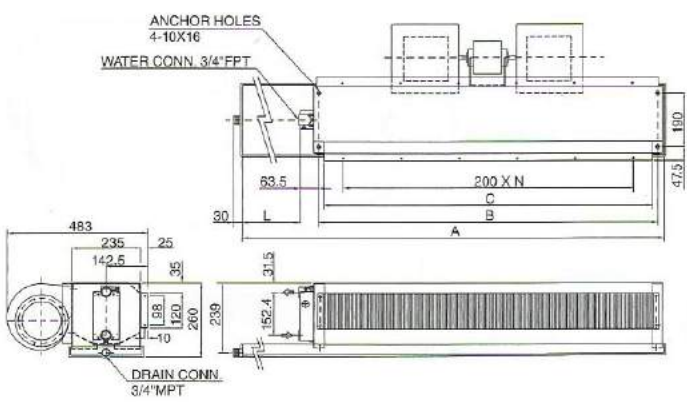
Unit Size		300	400	600	800	1000	1200	1400
Air Volume l/s	H	154	226	283	340	460	552	655
	M	135	183	259	285	410	506	570
	L	104	144	213	210	336	418	432
Cooling Capacity KW	SH	1.5	2.5	3.1	4.0	4.8	5.9	7.0
	TH	1.8	3.2	4.1	5.5	6.1	7.7	9.3
Heating Capacity KW		4.5	6.9	8.6	10.7	13.5	16.4	19.3
Water Flow l/s		0.09	0.16	0.2	0.27	0.3	0.37	0.45
W.P.D. kPa		3	9	15	32	7	12	18
Input Power W		68	94	119	155	204	234	283
Running Current A		0.31	0.43	0.55	0.71	0.94	1.07	1.30
Noise dB(A)	H	48.5	46.5	48.5	50.5	52.0	51.0	54.5
	M	45.0	41.0	46.5	46.5	49.0	49.0	51.0
	L	38.5	35.5	42.5	39.5	44.5	44.5	44.0
Weight kg (without plenum)		19	22	24	28	36	42	45
Weight kg (with plenum)		23	27	30	35	44	55	60
Holding Water Volume L		0.8	1.1	1.3	1.7	2.0	2.4	2.7
Casing		Galvanized Steel						
Fan		Galvanized sheet fabricated, Forward-Curved DIDW Fan						
Motor		3-Speed, PSC with Capacitor Cap and Flexible Conduit						
Power Source		AC220V, 50Hz, Single Phase						
Coil		Slit Surfaced, Aluminum Finned Coil complete with Female Sockets at Inlet/Outlet Conn. And Air Vent						
Operating Pressure		Max 1700kPa (250psig) unless otherwise specified						
Drain Pan		Stainless Steel, SUS430						

- Note:
- Cooling capacity is based on DB24°C, WB17.8°C, EWT7°C, LWT12°C.
  - Heating capacity is based on DB20°C, EWT60, same water flow as cooling.
  - Cooling/Heating Capacity, Input Power, Running Current are based on H speed.
  - Noise is measured at an anechoic chamber, 1m from the unit surface.
  - Running current may change according to the conditions.
  - Air volume is based on ESP 50Pa, without plenum and filler.

### Dimensions

Without Plenum **SRC-2HW-3R-DRC-Z**    **SRC-2HW-3R-DRE-Z**  
**SRC-2HW-3R-DRC15-Z**    **SRC-2HW-3R-DRE15-Z**  
**SRC-2HW-3R-DRC24-Z**    **SRC-2HW-3R-DRE24-Z**

With Plenum **SRC-2HW-3R-DRC-P/PW/PC**    **SRC-2HW-3R-DRE-P/PW/PC**  
**SRC-2HW-3R-DRC15-P/PW/PC**    **SRC-2HW-3R-DRE15-P/PW/PC**  
**SRC-2HW-3R-DRC24-P/PW/PC**    **SRC-2HW-3R-DRE24-P/PW/PC**



Unit Size	-Z/P/PW/PE/PC		15-Z/P/PW/PE/PC		24-Z/P/PW/PE/PC		B	C	N	NO. OF FAN	NO. OF MOTOR
	A	L	A	L	A	L					
SRC- 300-2HW-3R-DRC(E)	635	50	785	200	875	290	500	462	2	1	1
SRC- 400-2HW-3R-DRC(E)	885	50	1035	200	1125	290	750	712	3	2	1
SRC- 600-2HW-3R-DRC(E)	1020	50	1170	200	1260	290	885	847	4	2	1
SRC- 800-2HW-3R-DRC(E)	1305	50	1455	200	1545	290	1170	1132	5	2	1
SRC-1000-2HW-3R-DRC(E)	1490	50	1640	200	1730	290	1340	1302	6	3	2
SRC-1200-2HW-3R-DRC(E)	1740	50	1890	200	1980	290	1590	1552	7	4	2
SRC-1400-2HW-3R-DRC(E)	1920	50	2070	200	2160	290	1770	1732	8	4	2

- Note:
- Left hand unit is shown.
  - Furnish access door to service fan motor.
  - Wiring works between motor and switch, and unit to power source by contractors.
  - Unit shall be mounted horizontally.
  - To prevent condensation, fan interlock valve shall be furnished so that water supply will be stopped when fan is off.

Ceiling Recessed Model-High Static Model  
4-Row Cooling/Heating

**SRC-2HW-4R-DRC**  
**-Z/P/PW/PC**

**SRC-2HW-4R-DRE**  
**-Z/P/PW/PE**



**220V**

**Specification**

Unit Size		300	400	600	800	1000	1200	1400
Air Volume l/s	H	142	206	259	333	422	537	609
	M	127	166	237	283	384	493	533
	L	99	132	197	213	318	409	412
Cooling Capacity KW	SH	1.5	2.5	3.2	4.3	5.0	6.5	7.4
	TH	2.0	3.4	4.5	6.2	6.7	8.8	10.2
Heating Capacity KW		4.8	7.2	9.1	11.9	14.4	18.3	20.8
Water Flow l/s		0.1	0.17	0.22	0.3	0.32	0.42	0.49
W.P.D. kPa		2	6	11	24	5	9	13
Input Power W		65	91	115	148	190	231	275
Running Current A		0.30	0.42	0.53	0.68	0.86	1.06	1.26
Noise dB(A)	H	50.0	48.0	50.0	51.0	53.0	51.5	55.0
	M	45.5	44.5	48.5	47.0	50.5	50.0	52.0
	L	40.5	37.5	44.5	40.5	46.5	45.0	46.0
Weight kg (without plenum)		15.1	19.8	21.8	26	34.6	39.9	42.5
Weight kg (with plenum)		17.7	23.2	26	31.3	40.5	46.2	50.5
Holding Water Volume L		1.0	1.5	1.8	2.3	2.7	3.2	3.5
Casing		Galvanized Steel						
Fan		Galvanized sheet fabricated, Forward-Curved DIDW Fan						
Motor		3-Speed, PSC with Capacitor Cap and Flexible Conduit						
Power Source		AC220V, 50Hz, Single Phase						
Coil		Slit Surfaced, Aluminum Finned Coil complete with Female Sockets at Inlet/Outlet Conn. And Air Vent						
Operating Pressure		Max 1700kPa (250psig) unless otherwise specified						
Drain Pan		Stainless Steel, SUS430						

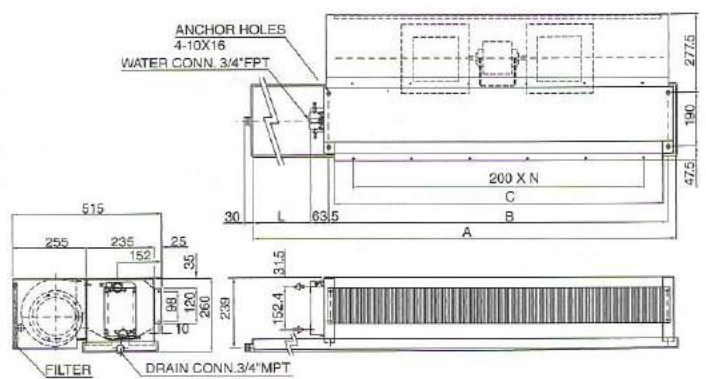
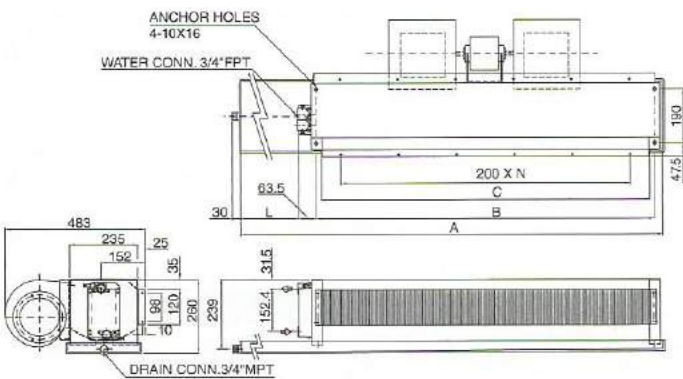
Note:

- Cooling capacity is based on DB24°C, WB17.8°C, EWT7°C, LWT12°C.
- Heating capacity is based on DB20°C, EWT60, same water flow as cooling.
- Cooling/Heating Capacity, Input Power, Running Current are based on H speed.
- Noise is measured at an anechoic chamber, 1m from the unit surface.
- Running current may change according to the conditions.
- Air volume is based on ESP 50Pa, without plenum and filter.

**Dimensions**

Without Plenum **SRC-2HW-4R-DRC-Z**    **SRC-2HW-4R-DRE-Z**  
**SRC-2HW-4R-DRC15-Z**    **SRC-2HW-4R-DRE15-Z**  
**SRC-2HW-4R-DRC24-Z**    **SRC-2HW-4R-DRE24-Z**

With Plenum **SRC-2HW-4R-DRC-P/PW/PC**    **SRC-2HW-4R-DRE-P/PW/PC**  
**SRC-2HW-4R-DRC15-P/PW/PC**    **SRC-2HW-4R-DRE15-P/PW/PC**  
**SRC-2HW-4R-DRC24-P/PW/PC**    **SRC-2HW-4R-DRE24-P/PW/PC**



Unit Size	-Z/P/PW/PE/PC		15-Z/P/PW/PE/PC		24-Z/P/PW/PE/PC		B	C	N	NO. OF FAN	NO. OF MOTOR
	A	L	A	L	A	L					
SRC- 300-2HW-4R-DRC(E)	635	50	785	200	875	290	500	462	2	1	1
SRC- 400-2HW-4R-DRC(E)	885	50	1035	200	1125	290	750	712	3	2	1
SRC- 600-2HW-4R-DRC(E)	1020	50	1170	200	1260	290	885	847	4	2	1
SRC- 800-2HW-4R-DRC(E)	1305	50	1455	200	1545	290	1170	1132	5	2	1
SRC-1000-2HW-4R-DRC(E)	1490	50	1640	200	1730	290	1340	1302	6	3	2
SRC-1200-2HW-4R-DRC(E)	1740	50	1890	200	1980	290	1580	1552	7	4	2
SRC-1400-2HW-4R-DRC(E)	1920	50	2070	200	2160	290	1770	1732	8	4	2

Note:

- Left hand unit is shown.
- Furnish access door to service fan motor.
- Wiring works between motor and switch, and unit to power source by contractors.

Ceiling Recessed Model-Large Air Volume Model  
3-Row Cooling/Heating

**SRC-2SH-3R-DRC**  
**-Z/P/PW/PC**

**SRC-2SH-3R-DRE**  
**-Z/P/PW/PE**



**220V**

**Specification**

Unit Size		300	400	600	800	1000	1200	1400	
Air Volume l/s	H	161	278	291	389	548	560	738	
	M	147	263	275	369	516	528	708	
	L	127	219	229	300	429	441	586	
Cooling Capacity KW	SH	1.5	2.9	3.2	4.4	5.5	6.0	7.7	
	TH	1.9	3.7	4.2	6.0	6.9	7.8	10.1	
Heating Capacity KW		4.6	8.0	8.8	11.9	15.4	16.6	21.1	
Water Flow l/s		0.09	0.18	0.21	0.29	0.34	0.38	0.49	
W.P.D. kPa		3	11	16	38	9	12	21	
Input Power W		80	129	131	192	265	256	365	
Running Current A		0.36	0.61	0.62	0.91	1.23	1.20	1.75	
Noise dB(A)	H	48.5	48.0	49.0	52.5	53.0	51.5	56.0	
	M	46.0	47.0	48.0	51.5	52.0	50.5	55.0	
	L	42.0	42.0	44.0	46.5	48.0	46.0	50.0	
Weight kg (without plenum)		19	22	24	28	36	42	45	
Weight kg (with plenum)		23	27	30	35	44	55	60	
Holding Water Volume L		0.8	1.1	1.3	1.7	2.0	2.4	2.7	
Casing		Galvanized Steel							
Fan		Galvanized sheet fabricated, Forward-Curved DIDW Fan							
Motor		3-Speed, PSC with Capacitor Cap and Flexible Conduit							
Power Source		AC220V, 50Hz, Single Phase							
Coil		Slit Surfaced, Aluminum Finned Coil complete with Female Sockets at Inlet/Outlet Conn. And Air Vent							
Operating Pressure		Max 1700kPa (250psig) unless otherwise specified							
Drain Pan		Stainless Steel, SUS430							

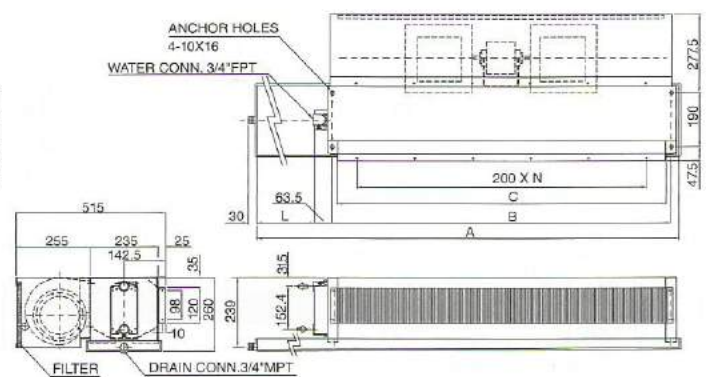
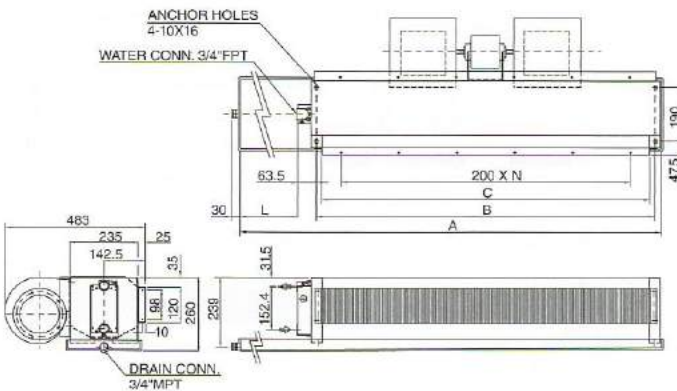
Note:

- Cooling capacity is based on DB24°C, WB17.8°C, EWT7°C, LWT12°C.
- Heating capacity is based on DB20°C, EWT60, same water flow as cooling.
- Cooling/Heating Capacity, Input Power, Running Current are based on H speed.
- Noise is measured at an anechoic chamber, 1m from the unit surface.
- Running current may change according to the conditions.
- Air volume is based on ESP 50Pa. without plenum and filter.

**Dimensions**

Without Plenum **SRC-2SH-3R-DRC-Z**      **SRC-2SH-3R-DRE-Z**  
**SRC-2SH-3R-DRC15-Z**      **SRC-2SH-3R-DRE15-Z**  
**SRC-2SH-3R-DRC24-Z**      **SRC-2SH-3R-DRE24-Z**

With Plenum **SRC-2SH-3R-DRC-P/PW/PC**      **SRC-2SH-3R-DRE-P/PW/PC**  
**SRC-2SH-3R-DRC15-P/PW/PC**      **SRC-2SH-3R-DRE15-P/PW/PC**  
**SRC-2SH-3R-DRC24-P/PW/PC**      **SRC-2SH-3R-DRE24-P/PW/PC**



Unit Size	-Z/P/PW/PE/PC		15-Z/P/PW/PE/PC		24-Z/P/PW/PE/PC		B	C	N	NO. OF FAN	NO. OF MOTOR
	A	L	A	L	A	L					
SRC- 300-2SH-3R-DRC(E)	635	50	785	200	875	290	500	462	2	1	1
SRC- 400-2SH-3R-DRC(E)	885	50	1035	200	1125	290	750	712	3	2	1
SRC- 600-2SH-3R-DRC(E)	1020	50	1170	200	1260	290	885	847	4	2	1
SRC- 800-2SH-3R-DRC(E)	1305	50	1455	200	1545	290	1170	1132	5	2	1
SRC-1000-2SH-3R-DRC(E)	1490	50	1640	200	1730	290	1340	1302	6	3	2
SRC-1200-2SH-3R-DRC(E)	1740	50	1890	200	1980	290	1590	1552	7	4	2
SRC-1400-2SH-3R-DRC(E)	1920	50	2070	200	2180	290	1770	1732	8	4	2

Note:

- Left hand unit is shown.
- Furnish access door to service fan motor.
- Wiring works between motor and switch, and unit to power source by contractors.



**Ceiling Recessed Model-Large Air Volume Model  
4-Row Cooling/Heating**

**SRC-2SH-4R-DRC  
-Z/P/PW/PC**

**SRC-2SH-4R-DRE  
-Z/P/PW/PE**



**220V**

**Specification**

Unit Size		300	400	600	800	1000	1200	1400
Air Volume l/s	H	148	246	265	374	482	541	667
	M	137	233	251	359	461	511	646
	L	120	197	212	294	396	429	550
Cooling Capacity KW	SH	1.6	2.9	3.3	4.8	5.6	6.5	8.0
	TH	2.0	3.9	4.5	6.8	7.4	8.7	10.9
Heating Capacity KW		4.9	8.3	9.2	13.1	16.0	18.3	22.3
Water Flow l/s		0.1	0.19	0.22	0.33	0.36	0.42	0.53
W.P.D. kPa		2	8	11	28	6	9	15
Input Power W		75	121	125	185	240	248	339
Running Current A		0.34	0.58	0.59	0.87	1.12	1.17	1.63
Noise dB(A)	H	50.0	49.5	50.0	53.0	54.5	52.5	56.5
	M	48.5	48.5	48.5	52.0	53.5	51.0	55.5
	L	45.0	44.5	45.0	47.0	49.5	46.5	51.5
Weight kg (without plenum)		15.1	19.8	21.8	26	34.6	39.9	42.5
Weight kg (with plenum)		17.7	23.2	26	31.3	40.5	46.2	50.5
Holding Water Volume L		1.0	1.5	1.8	2.3	2.7	3.2	3.5
Casing		Galvanized Steel						
Fan		Galvanized sheet fabricated, Forward-Curved DIDW Fan						
Motor		3-Speed, PSC with Capacitor Cap and Flexible Conduit						
Power Source		AC220V, 50Hz, Single Phase						
Coil		Slit Surfaced, Aluminum Finned Coil complete with Female Sockets at Inlet/Outlet Conn. And Air Vent						
Operating Pressure		Max 1700kPa (250psig) unless otherwise specified						
Drain Pan		Stainless Steel, SUS430						

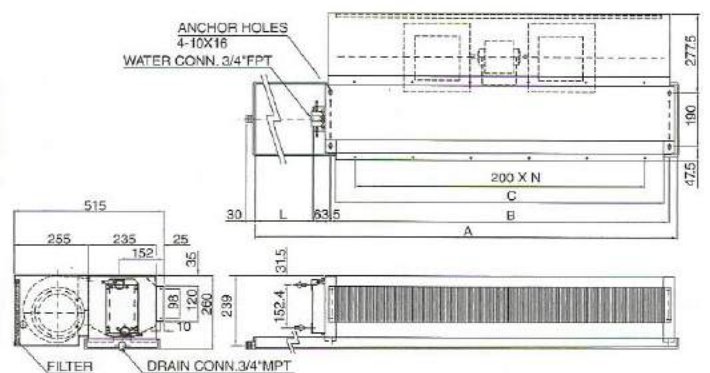
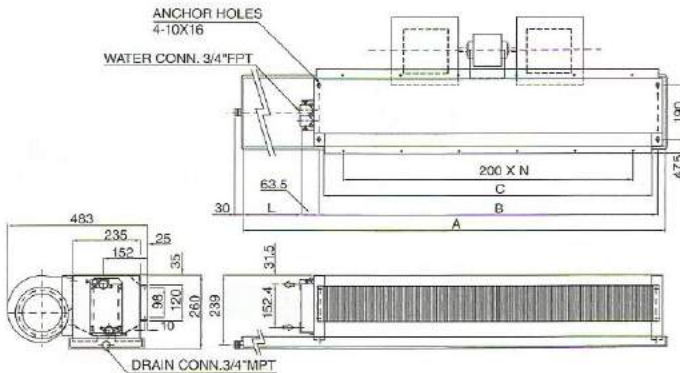
Note:

- Cooling capacity is based on DB24°C, WB17.8°C, EWT7°C, LWT12°C.
- Heating capacity is based on DB20°C, EWT60, same water flow as cooling.
- Cooling/Heating Capacity, Input Power, Running Current are based on H speed.
- Noise is measured at an anechoic chamber, 1m from the unit surface.
- Running current may change according to the conditions.
- Air volume is based on ESP 50Pa, without plenum and filter.

**Dimensions**

Without Plenum **SRC-2SH-4R-DRC-Z** **SRC-2SH-4R-DRE-Z**  
**SRC-2SH-4R-DRC15-Z** **SRC-2SH-4R-DRE15-Z**  
**SRC-2SH-4R-DRC24-Z** **SRC-2SH-4R-DRE24-Z**

With Plenum **SRC-2SH-4R-DRC-P/PW/PC** **SRC-2SH-4R-DRE-P/PW/PC**  
**SRC-2SH-4R-DRC15-P/PW/PC** **SRC-2SH-4R-DRE15-P/PW/PC**  
**SRC-2SH-4R-DRC24-P/PW/PC** **SRC-2SH-4R-DRE24-P/PW/PC**



Unit Size	-Z/P/PW/PE/PC		15-Z/P/PW/PE/PC		24-Z/P/PW/PE/PC		B	C	N	NO. OF FAN	NO. OF MOTOR
	A	L	A	L	A	L					
SRC- 300-2SH-4R-DRC(E)	635	50	785	200	875	290	500	462	2	1	1
SRC- 400-2SH-4R-DRC(E)	885	50	1035	200	1125	290	750	712	3	2	1
SRC- 600-2SH-4R-DRC(E)	1020	50	1170	200	1260	290	885	847	4	2	1
SRC- 800-2SH-4R-DRC(E)	1305	50	1455	200	1545	290	1170	1132	5	2	1
SRC-1000-2SH-4R-DRC(E)	1490	50	1640	200	1730	290	1340	1302	6	3	2
SRC-1200-2SH-4R-DRC(E)	1740	50	1890	200	1980	290	1590	1552	7	4	2
SRC-1400-2SH-4R-DRC(E)	1920	50	2070	200	2160	290	1770	1732	8	4	2

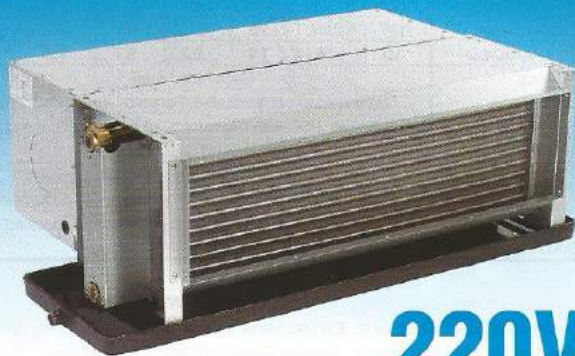
Note:

- Left hand unit is shown.
- Furnish access door to service fan motor.
- Wiring works between motor and switch, and unit to power source by contractors.
- Unit shall be mounted horizontally.
- To prevent condensation, fan interlock valve shall be furnished so that water supply will be stopped when fan is off.

Ceiling Recessed,  
High Static, Large Air Volume Model  
4-Row Cooling/Heating

**TCRH-600-2HW-4R-DRC**  
**-Z/P/PW/PC**

**TCRH-600-2HW-4R-DRE**  
**-Z/P/PW/PE**



**220V**

## Specification

Unit Size		600
Air Volume l/s	H	390
	M	356
	L	315
Cooling Capacity KW	SH	4.8
	TH	6.6
Heating Capacity KW		13.1
Water Flow l/s		0.32
W.P.D. kPa		21
Input Power W		262
Running Current A		1.18
Noise dB(A)	H	56.5
	M	55.0
	L	53.0
Weight kg (without plenum)		35
Weight kg (with plenum)		37
Holding Water Volume L		2.6
Casing		Galvanized Steel
Fan		Galvanized sheet fabricated, Forward-Curved DIDW Fan
Motor		3-Speed, PSC with Capacitor Cap and Flexible Conduit
Power Source		AC220V, 50Hz, Single Phase
Coil		Slit Surfaced, Aluminum Finned Coil complete with Female Sockets at Inlet/Outlet Conn. And Air Vent
Operating Pressure		Max 1700kPa (250psig) unless otherwise specified
Drain Pan		Stainless Steel, SUS430

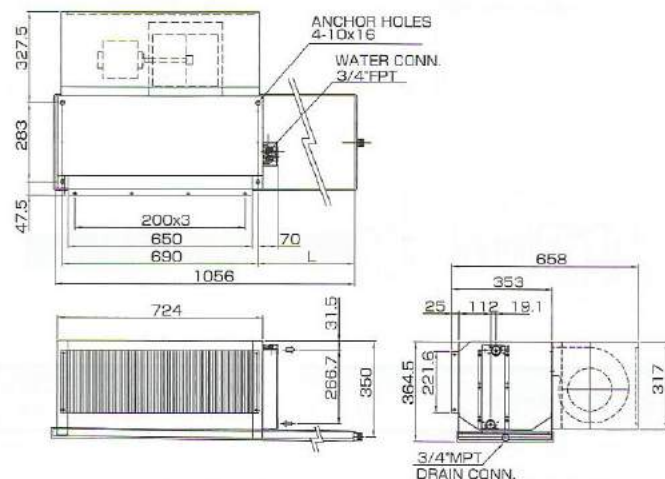
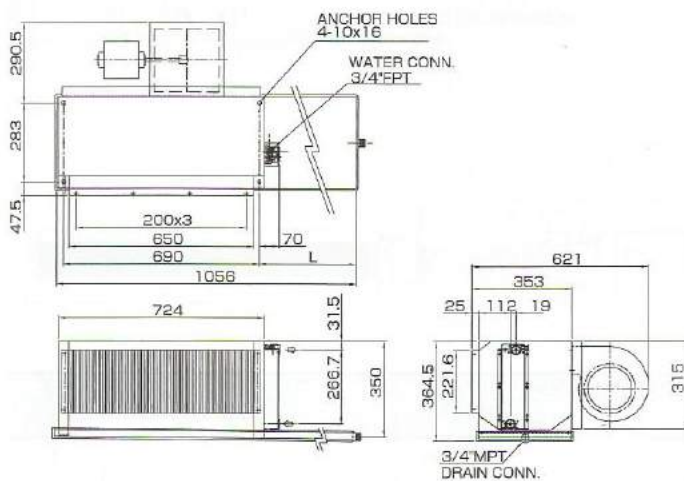
Note:

- Cooling capacity is based on DB24°C, WB17.8°C, EWT7°C, LWT12°C.
- Heating capacity is based on DB20°C, EWT60, same water flow as cooling.
- Cooling/Heating Capacity, Input Power, Running Current are based on H speed.
- Noise is measured at an anechoic chamber, 1m from the unit surface.
- Running current may change according to the conditions.
- Air volume is based on ESP 100Pa, without plenum and filter.

## Dimensions

Without Plenum **TCRH-600-2HW-4R-DRC-Z**  
**TCRH-600-2HW-4R-DRC15-Z**  
**TCRH-600-2HW-4R-DRE-Z**  
**TCRH-600-2HW-4R-DRE15-Z**

With Plenum **TCRH-600-2HW-4R-DRC-P/PW/PC**  
**TCRH-600-2HW-4R-DRC15-P/PW/PC**  
**TCRH-600-2HW-4R-DRE-P/PW/PC**  
**TCRH-600-2HW-4R-DRE15-P/PW/PC**



Unit Size	-Z/PW/PE/PC	15-Z/P/PW/PE/PC
	L	L
TCRH- 600-2HW-4R-DRC(E)	191.4	341.4

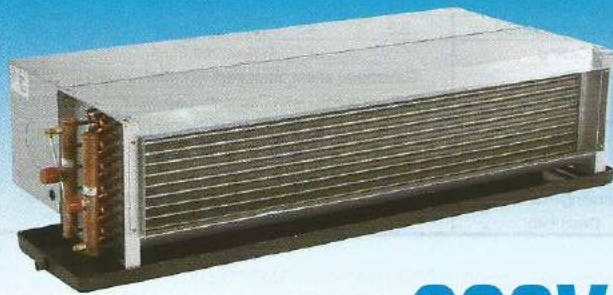
Note:

- Right hand unit is shown.
- Furnish access door to service fan motor.
- Wiring works between motor and switch, and unit to power source by contractors.
- Unit shall be mounted horizontally.
- To prevent condensation, fan interlock valve shall be furnished so that water supply will be stopped when fan is off.

Ceiling Recessed,  
High Static, Large Air Volume Model  
4-Row Cooling/Heating

**TCRH-[1000  
1200  
1600  
2000]-2HW-4R-DRC  
-Z/P/PW/PC**

**TCRH-[1000  
1200  
1600  
2000]-2HW-4R-DRE  
-Z/P/PW/PC**



**220V**

**Specification**

Unit Size		1000	1200	1600	2000
Air Volume l/s	H	627	663	893	1079
	M	572	637	844	1041
	L	491	582	770	944
Cooling Capacity KW	SH	7.6	8.1	10.9	13.5
	TH	11.2	10.9	15.2	20.1
Heating Capacity KW		20.6	22.0	29.2	37.1
Water Flow l/s		0.54	0.53	0.73	0.97
W.P.D. kPa		23	5	9	19
Input Power W		396	409	571	677
Running Current A		1.82	1.89	2.64	3.12
Noise dB(A)	H	56.0	57.0	58.5	59.0
	M	54.5	56.5	57.5	58.0
	L	52.5	55.0	55.5	55.0
Weight kg (without plenum)		40	46	60	72
Weight kg (with plenum)		44	52	68	82
Holding Water Volume L		3.1	3.9	4.5	5.7
Casing		Galvanized Steel			
Fan		Galvanized sheet fabricated, Forward-Curved DIDW Fan			
Motor		3-Speed, PSC with Capacitor Cap and Flexible Conduit			
Power Source		AC220V, 50Hz, Single Phase			
Coil		Slit Surfaced, Aluminum Finned Coil complete with Female Sockets at Inlet/Outlet Conn. And Air Vent			
Operating Pressure		Max 1700kPa (250psig) unless otherwise specified			
Drain Pan		Stainless Steel, SUS430			

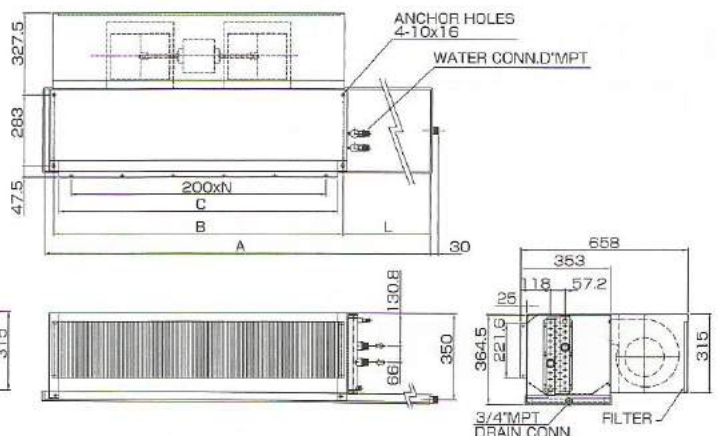
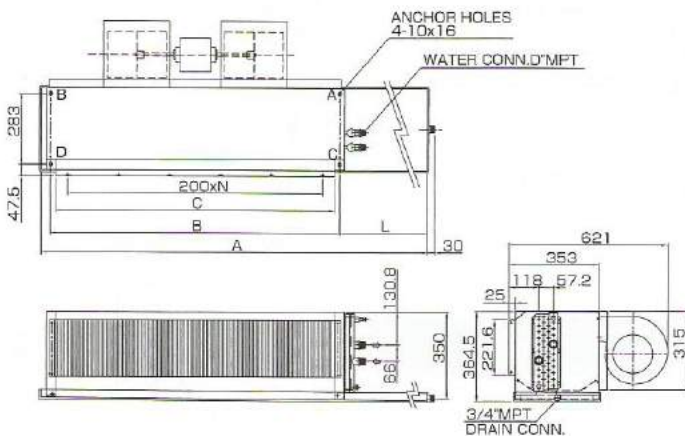
Note:

- Cooling capacity is based on DB24°C, WB17.8°C, EWT7°C, LWT12°C.
- Heating capacity is based on DB20°C, EWT60, same water flow as cooling.
- Cooling/Heating Capacity, Input Power, Running Current are based on H speed.
- Noise is measured at an anechoic chamber, 1m from the unit surface.
- Running current may change according to the conditions.
- Air volume is based on ESP 100Pa, without plenum and filter.

**Dimensions**

Without Plenum **TCRH-2HW-4R-DRC-Z** **TCRH-2HW-4R-DRE-Z**  
**TCRH-2HW-4R-DRC15-Z** **TCRH-2HW-4R-DRE15-Z**

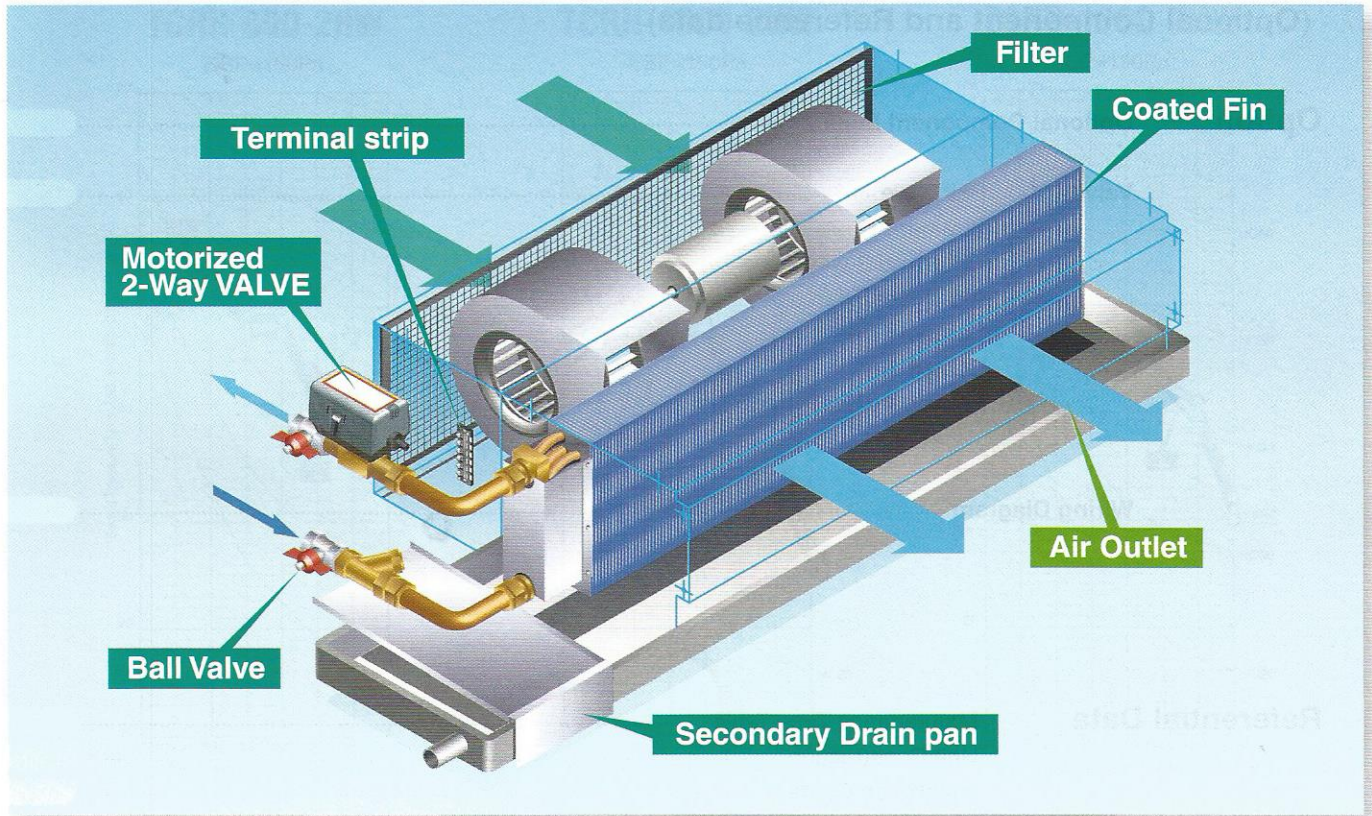
With Plenum **TCRH-2HW-4R-DRC-P/PW/PC** **TCRH-2HW-4R-DRE-P/PW/PC**  
**TCRH-2HW-4R-DRC15-P/PW/PC** **TCRH-2HW-4R-DRE15-P/PW/PC**



Unit Size	-Z/P/PW/PE/PC		15-Z/P/PW/PE/PC		B	C	N	D	NO. OF FAN	NO. OF MOTOR
	A	L	A	L						
TCRH-1000-2HW-4R-DRC(E)	1050	122	1200	272	885	847	4	1	2	1
TCRH-1200-2HW-4R-DRC(E)	1335	157	1485	307	1135	1097	5	1	2	1
TCRH-1600-2HW-4R-DRC(E)	1505	122	1655	272	1340	1302	6	1	3	2
TCRH-2000-2HW-4R-DRC(E)	1935	122	2065	272	1770	1732	7	1-1/4	4	2

- Note:
- Right hand unit is shown.
  - Furnish access door to service fan motor.
  - Wiring works between motor and switch, and unit to power source by contractors.
  - Unit shall be mounted horizontally.
  - To prevent condensation, fan interlock valve shall be furnished so that water supply will be stopped when fan is off.

# Summary of FCU Optional Component



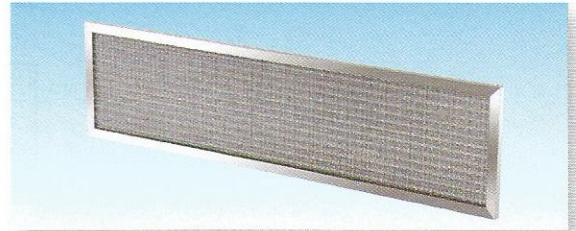
**Ball Valve**



**Strainer**



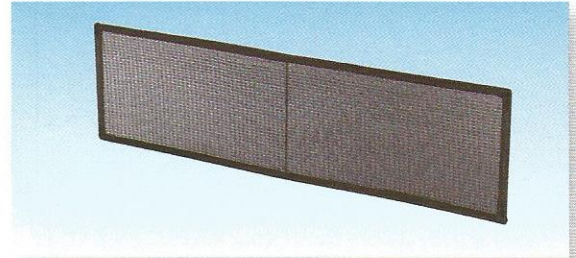
**Aluminum Filter**



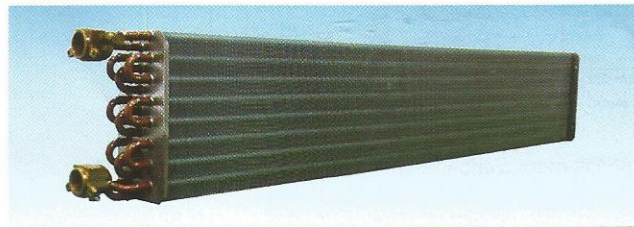
**Motorized 2-way Valve**



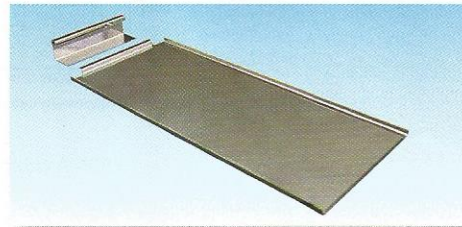
**Saranet Filter**



**Coated Fin**

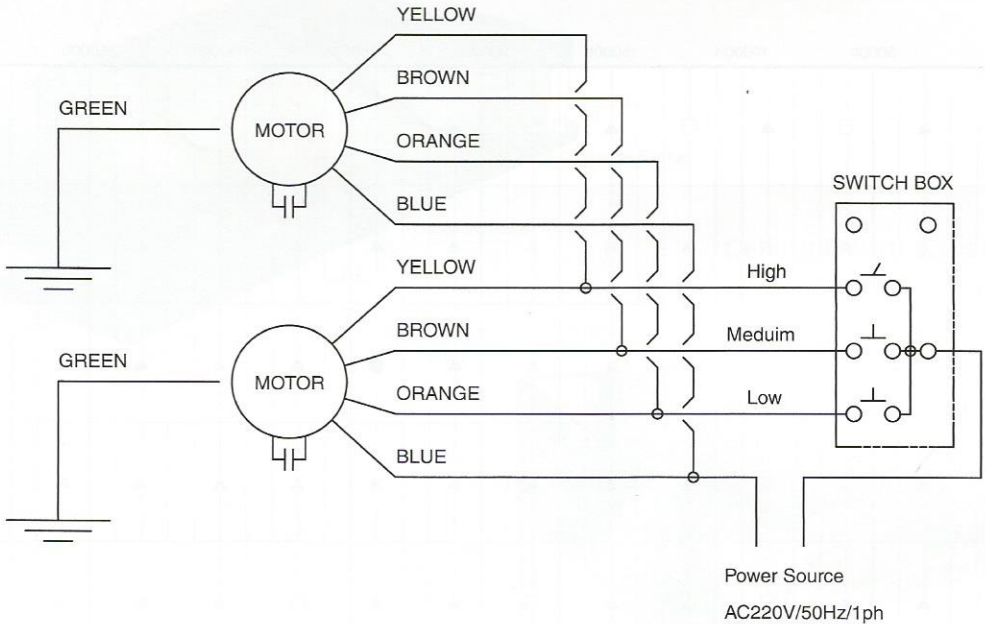


**Secondary Drain Pan**

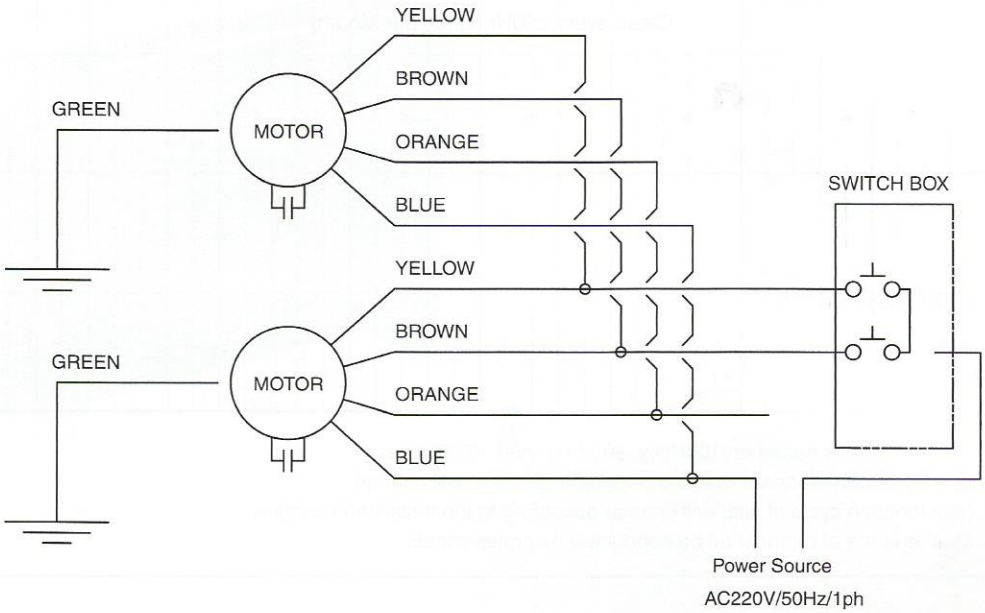


# Wiring Diagram

## SRC MODEL AC220V



## TCRH MODEL AC220V



Note:  
Electrical connection should be made to the unit according to local codes and ordinances.